

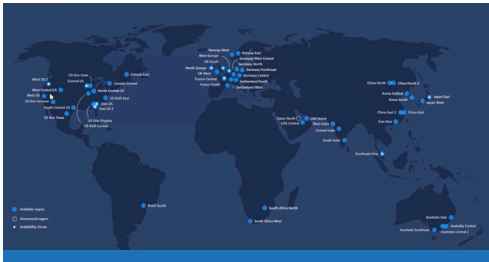


LearnKey's Microsoft Certified Fundamentals Courseware

With over 30 years of experience, LearnKey offers engaging, interactive, and flexible training mapped to industry certifications available online through GMetrix.

- Full-motion digital video available anytime, anywhere with an Internet connection
- The GMetrix platform provides the ultimate certification training solution with a single sign-on between training and test prep
- Project-based learning lessons and workbooks with hands-on activities help reinforce what the students are learning
- Teacher workbooks with answer keys and lesson plans

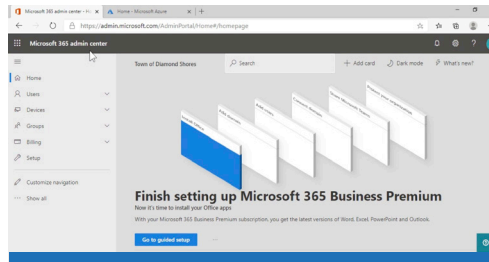
COURSE OFFERINGS



Microsoft Azure Fundamentals

LearnKey's Azure Fundamentals (AZ-900) course provides a fundamental introduction to cloud services with an emphasis on Microsoft Azure. The course serves as an excellent steppingstone to learning Azure further as it will prepare students for the AZ-900 exam, a Microsoft exam on Azure Fundamentals. Specific topics covered in this course include cloud concepts, core Azure fundamentals, security, privacy, compliance, trust, pricing, and support. This should be the first course for anyone aspiring to improve their employability prospects for any Azure Administrator, Developer, or Data Analyst career path.

CLASS HOURS: 17.5 HRS.

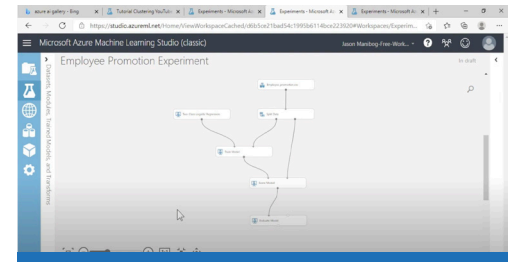


Microsoft 365 Fundamentals (MS-900)

LearnKey's Microsoft 365 Fundamentals (MS-900) course covers concepts of the Software as a Service (SaaS) portion of the cloud through introducing one to manage implementations through Microsoft 365. This course is excellent for those wanting to obtain the Microsoft 365 Fundamentals certification and become more employable in the area of SaaS administration. Specific topics in this course include: cloud concepts; core Microsoft 365 services and concepts; security, compliance, privacy and trust in Microsoft 365; and Microsoft 365 pricing and support.

This course offers both a web version and in-app option for all labs and assessments to accommodate students accessing the courseware remotely on Chromebooks.

CLASS HOURS: 16.5 HRS.



Microsoft Azure AI Fundamentals (AI-900)

LearnKey's Azure AI Fundamentals (AI-900) course is an introduction to building artificial intelligence (AI) machine learning models through Azure. The course also covers basic AI concepts, giving those who take this course an increase in skills needed to land an introductory AI-based job. Specific exam topics include AI workloads and considerations, fundamental principles of machine learning, computer vision workloads, Natural Language Processing (NLP) workloads, and conversational AI workloads.

This course offers a web version for all labs and assessments to accommodate students accessing the courseware remotely on Chromebooks.

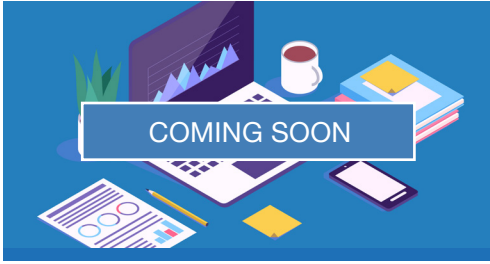
CLASS HOURS: 25 HRS.



Each Course Includes:

Video-based instruction, exercise labs, pre and posttests, flash cards in addition to a PDF project workbook. The workbook includes fill-in-the-blanks, glossary terms and definitions and many other resources to help reinforce learning.

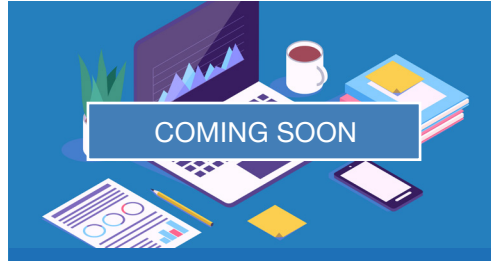
COURSE OFFERINGS CONTINUED



Microsoft Security, Compliance, and Identify Fundamentals (SC-900)

Coming January 2022.

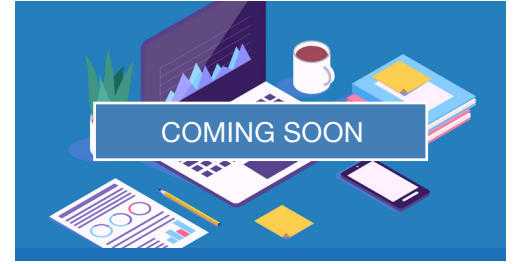
CLASS HOURS: N/A.



Microsoft Dynamics 365 Fundamentals (MB-901)

Coming Spring 2022.

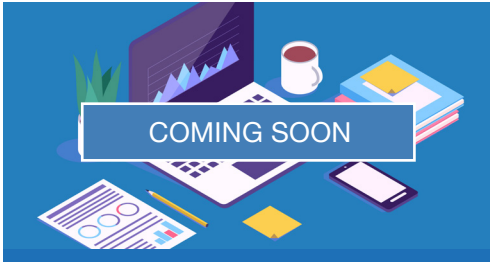
CLASS HOURS: N/A.



Microsoft Azure Data Fundamentals (DP-900)

Coming Summer 2022.

CLASS HOURS: N/A.



Microsoft Power Platform Fundamentals (PL-900)

Coming Summer 2022.

CLASS HOURS: N/A.



Each Course Includes:

Video-based instruction, exercise labs, pre-assessments and post-assessments and, flash cards in addition to a PDF project workbook. The workbook includes fill-in-the-blanks, glossary terms and definitions, and many other resources to help reinforce learning.